

2018 #REALCOLLEGE SURVEY

SCHOOL REPORT

APRIL 2019



For College, Community, and Justice

HOPE4COLLEGE.COM

2018 #REALCOLLEGE SURVEY SCHOOL REPORT FOR FULLERTON COLLEGE

Report prepared by the Hope Center for College, Community, and
Justice at Temple University

April 2019

OVERVIEW

* Invitations to complete the questionnaire were sent by email to approximately 24,100 students from Fullerton College and 899 students participated. Thus, the estimated response rate is 3.7%.

* Overall Basic Needs Insecurity Rates:

- 50% of respondents were food insecure in the prior 30 days
- 61% of respondents were housing insecure in the previous year
- 17% of respondents were homeless in the previous year

* 71% of students at Fullerton College experienced at least one of these forms of basic needs insecurity in the past year.

* There is substantial variation in basic needs insecurity across subgroups.

* 15% of food insecure students utilize SNAP benefits and 6% of homeless students utilize housing benefits.

For more information on the research methodology and survey participants, please refer to the appendices of the National 2018 #RealCollege Survey report.

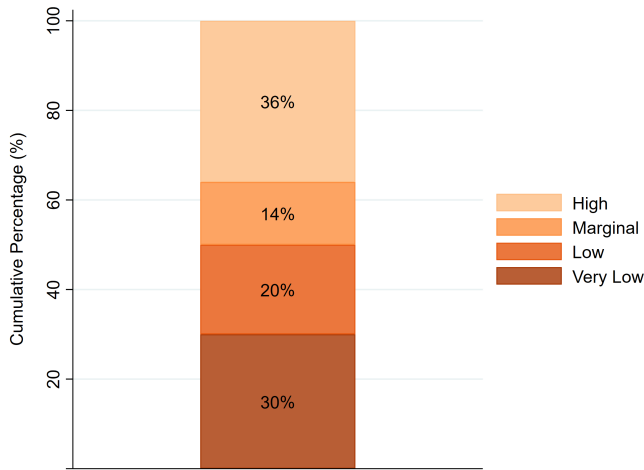
PREVALENCE OF BASIC NEEDS INSECURITY

Food Insecurity

Food insecurity is the limited or uncertain availability of nutritionally adequate and safe food, or the ability to acquire such food in a socially acceptable manner. The most extreme form is often accompanied with physiological sensations of hunger. We assessed food security among students using the U.S. Department of Agriculture's (USDA) 18-item set of questions.

During the 30 days preceding the survey, approximately 50% of survey respondents at Fullerton College experienced low or very low levels of food security (Figure 1). Moreover, 52% of survey respondents at Fullerton College worry about running out of food before having money to buy more and 52% cannot afford to eat balanced meals.

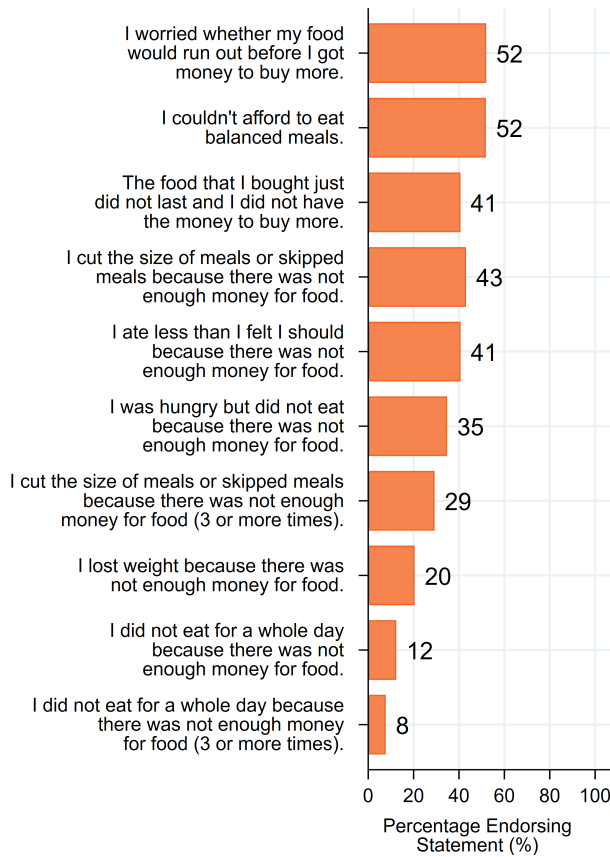
Figure 1. Food Security Among Survey Respondents at Fullerton College



Source: 2018 #RealCollege Survey

Notes: According to the USDA, students at either low or very low food security are termed food insecure. For the full list of questions used to measure food security, see our full report available at www.hope4college.com. Cumulative percentage may not add up to 100 due to rounding error.

Figure 2. Food Insecurity Among Survey Respondents at Fullerton College



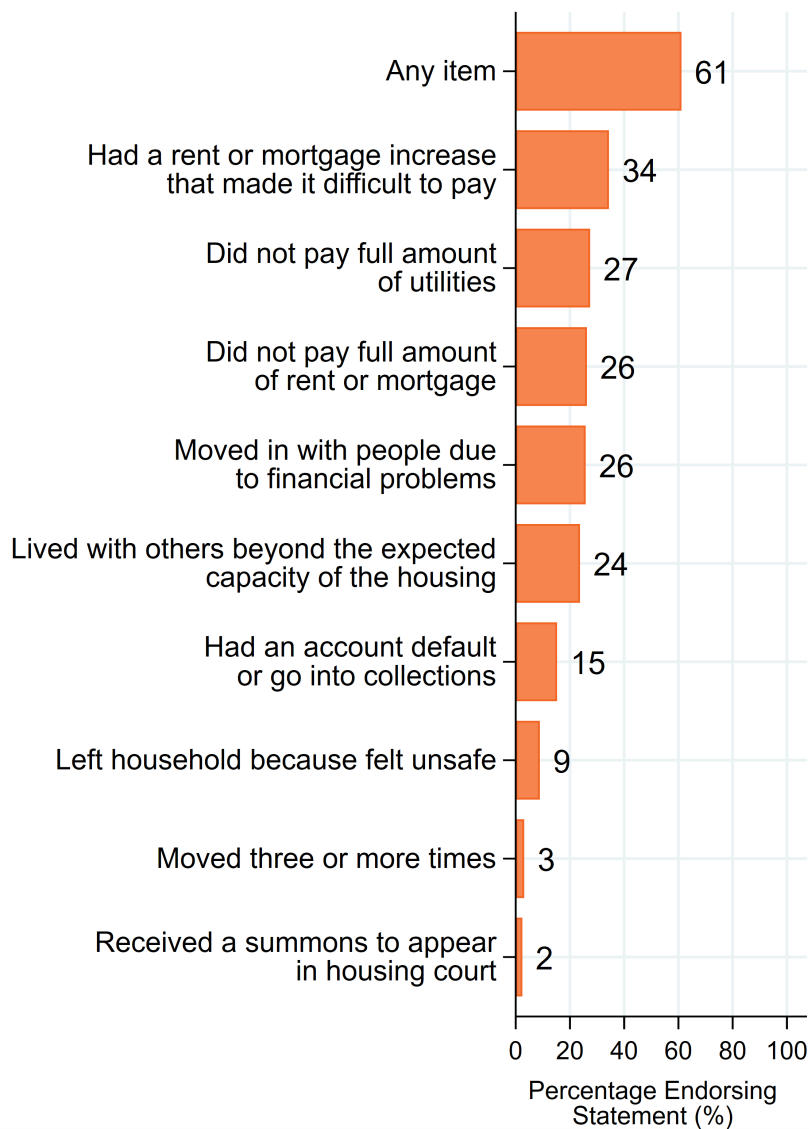
Source: 2018 #RealCollege Survey

Housing Insecurity

Housing insecurity includes a broad set of challenges such as the inability to pay rent or utilities or the need to move frequently. All of these challenges affect students, and results suggest they are more likely to suffer some form of housing insecurity than to have all their needs met during college. Housing insecurity among students was assessed with a nine-item set of questions developed by the Hope Center. Students are classified as housing insecure if they answered affirmatively to experiencing at least one of those items in the previous year.

How prevalent is housing insecurity at Fullerton College? As displayed below, 61% of survey respondents are housing insecure (Figure 3).

Figure 3. Housing Insecurity Among Survey Respondents at Fullerton College



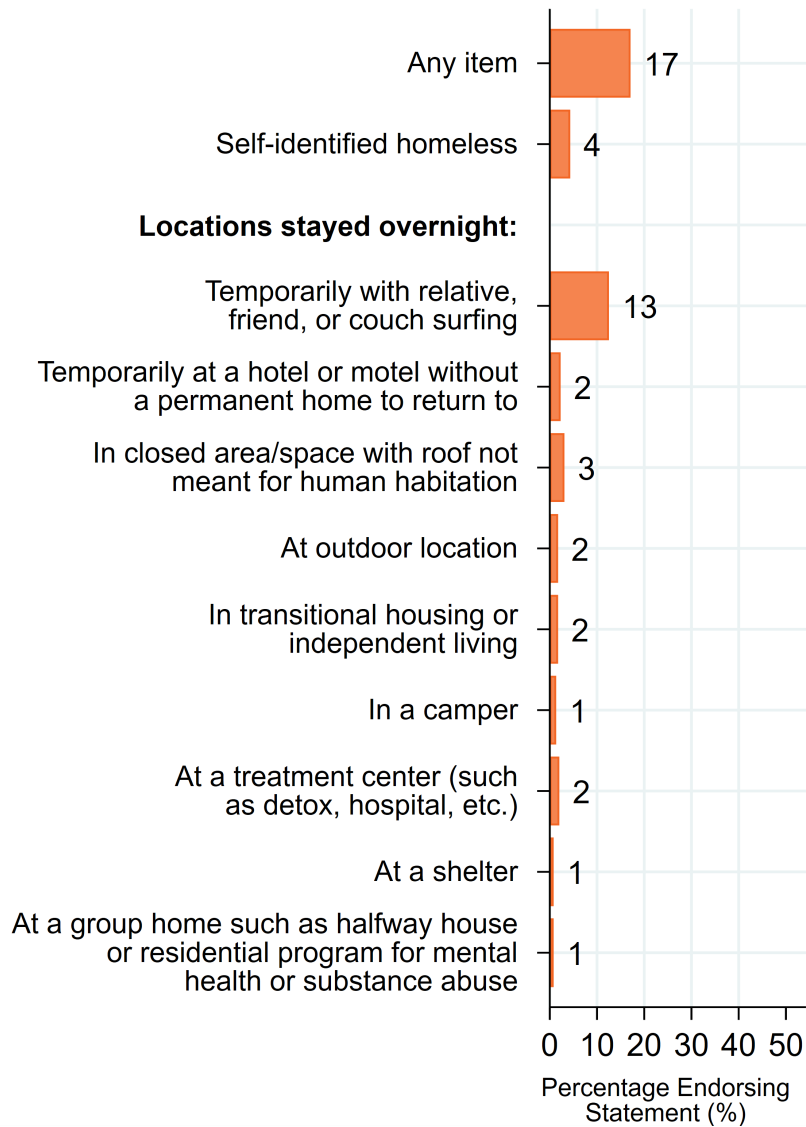
Source: 2018 #RealCollege Survey

Homelessness

Homelessness means that a person does not have a stable place to live. Students were identified as homeless if they responded affirmatively to a question asking if they had been homeless or they experienced living conditions that are considered signs of homelessness in the previous year. Homelessness among students was assessed with a tool developed by California State University researchers.

How prevalent is homelessness at Fullerton College? As displayed below, 17% of survey respondents experience homelessness (Figure 4).

Figure 4. Homelessness Among Survey Respondents at Fullerton College

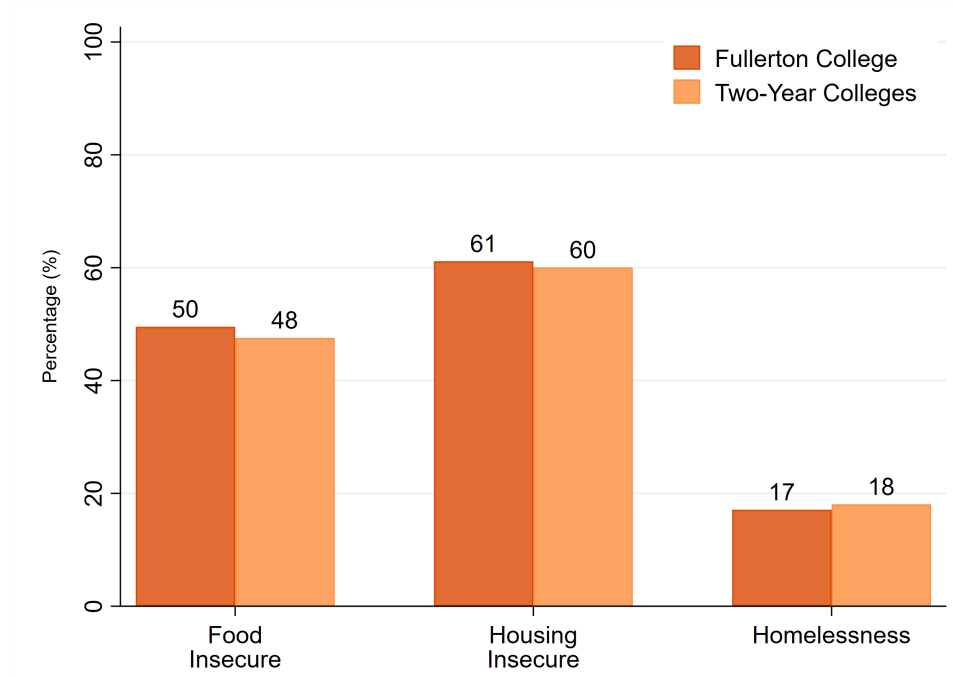


Source: 2018 #RealCollege Survey

COMPARISON TO TWO-YEAR COLLEGES

In comparison to the overall rates for students attending a two-year college in 2018, Fullerton College has a higher rate of food insecurity, a higher rate of housing insecurity, and a lower rate of homelessness (Figure 5).

Figure 5. Comparison of Basic Needs Insecurity

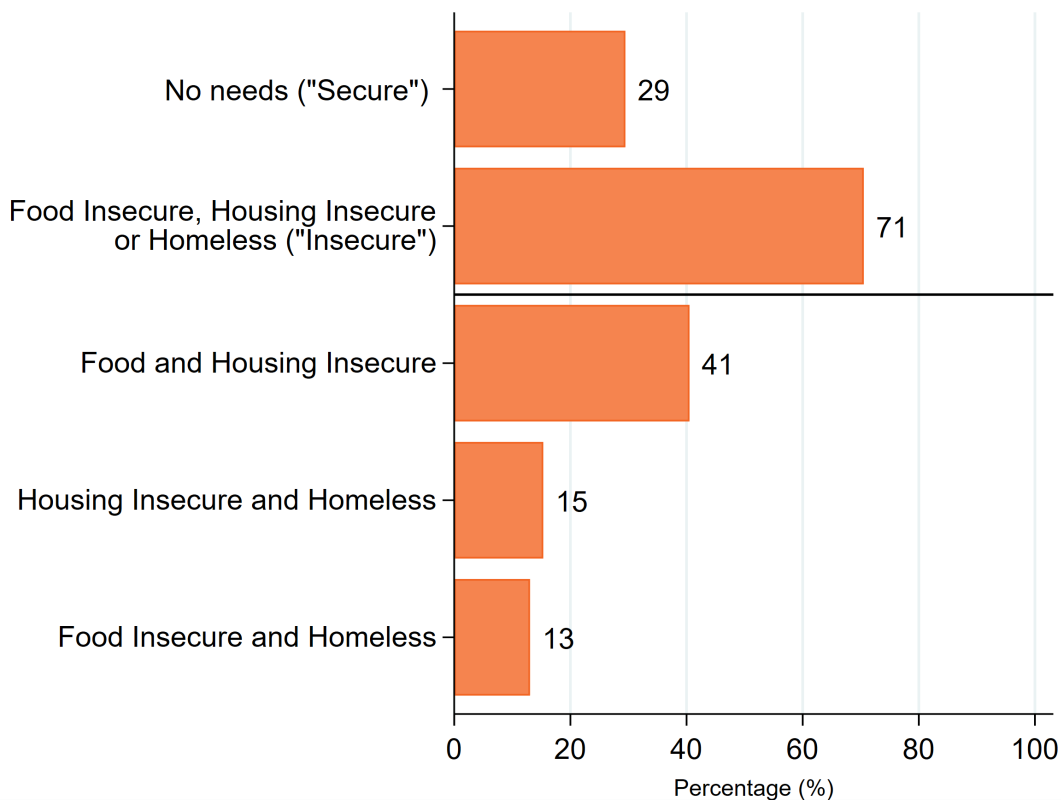


Source: 2018 #RealCollege Survey

OVERLAPPING CHALLENGES

Food insecurity, housing insecurity, and homelessness are overlapping concerns, with 71% of students at Fullerton College experiencing at least one of these forms of basic needs insecurity in the past year (Figure 6).

Figure 6. Intersections of Food Insecurity, Housing Insecurity, and Homelessness Among Survey Respondents at Fullerton College



Source: 2018 #RealCollege Survey

DISPARITIES IN BASIC NEEDS INSECURITY

Some students are at higher risk of basic needs insecurity than others. The tables in this section present rates of food insecurity, housing insecurity, and homelessness according to students' demographic, academic, and economic circumstances, as well as their life circumstances.

By Demographic Background

Table 1. Demographic Disparities in Rates of Food Insecurity, Housing Insecurity, and Homelessness Among Survey Respondents at Fullerton College

	Number of Students	Food Insecurity (%)	Housing Insecurity (%)	Homelessness (%)
GENDER ORIENTATION				
Male	192	51	60	21
Female	485	49	62	15
Transgender	12	50	67	42
Other	18	39	50	11

SEXUAL ORIENTATION				
Heterosexual or straight	564	48	60	16
Gay or lesbian	21	76	81	43
Bisexual	57	60	72	23
Other	44	50	55	18
RACIAL OR ETHNIC BACKGROUND				
White or Caucasian	174	44	58	21
African American or Black	20	80	75	35
Hispanic or Latinx	372	53	66	16
American Indian or Alaskan Native	10	50	.	30
Middle Eastern or North African or Arab or Arab American	18	28	44	6
Southeast Asian	49	37	46	12
Pacific Islander or Native Hawaiian	20	60	75	25
Other Asian or Asian American	80	41	48	18
Other	27	56	63	22
Prefers not to answer	23	57	65	9
STUDENT IS A U.S. CITIZEN OR PERMANENT RESIDENT				
Yes	636	50	62	18
No	28	50	57	4
Prefers not to answer	23	52	61	13
HIGHEST LEVEL OF PARENTAL EDUCATION				
No high school diploma	141	52	72	15
High school diploma	150	60	63	16
Some college	234	52	65	21

Bachelors degree	145	30	44	13
Does not know	21	67	57	29
AGE				
18 to 20	293	42	49	15
21 to 25	237	58	67	19
26 to 30	69	54	77	20
Older than 30	89	49	73	16

Source: 2018 #RealCollege Survey

Note: Results from any category with fewer than 10 participants are not shown in the table.

By Student Academic, Economic, and Life Experiences

Table 2. Rates of Food Insecurity, Housing Insecurity, and Homelessness by Student Life Experiences Among Survey Respondents at Fullerton College

	Number of Students	Food Insecurity (%)	Housing Insecurity (%)	Homelessness (%)
COLLEGE ENROLLMENT STATUS				
Full-time (at least 12 credits)	422	49	53	15
Part-time (fewer than 12 credits)	319	51	72	19
YEARS IN COLLEGE				
Less than 1	182	41	46	14
1 to 2	255	47	63	17
3 or more	276	56	69	19
DEPENDENCY STATUS				
Dependent	302	47	56	17
Independent	382	52	66	18
STUDENT RECEIVES THE PELL GRANT				
Yes	279	60	67	20
No	464	43	58	15
STUDENT HAS CHILDREN				
Yes	127	52	60	17
No	616	49	61	17
RELATIONSHIP STATUS				

Single	392	53	60	19
In a relationship	218	48	59	16
Married or domestic partnership	70	40	69	7
Divorced	11	55	91	27
Widowed
STUDENT HAS BEEN IN FOSTER CARE				
Yes	21	90	86	52
No	671	48	61	16
STUDENT HAS BEEN IN MILITARY				
Yes	14	71	93	36
No	677	49	61	17
EMPLOYMENT STATUS				
Employed	443	53	68	19
Not employed, looking for work	128	52	57	19
Not employed, not looking for work	152	36	43	10
STUDENT HAS BEEN CONVICTED OF A CRIME				
Yes	17	76	82	35
No	702	49	61	17
DISABILITY OR MEDICAL CONDITION				
Learning disability (dyslexia, etc.)	49	73	84	29
Attention deficit hyperactivity disorder (ADHD)	55	73	78	29
Autism spectrum disorder
Physical disability (speech, sight, mobility, hearing, etc.)	33	61	73	27
Chronic illness (asthma, diabetes,	79	56	62	11

autoimmune disorder, cancer, etc.)				
Psychological disorder (depression, anxiety, etc.)	249	60	73	28
Other	13	38	38	23
No disability or medical condition	365	42	53	12

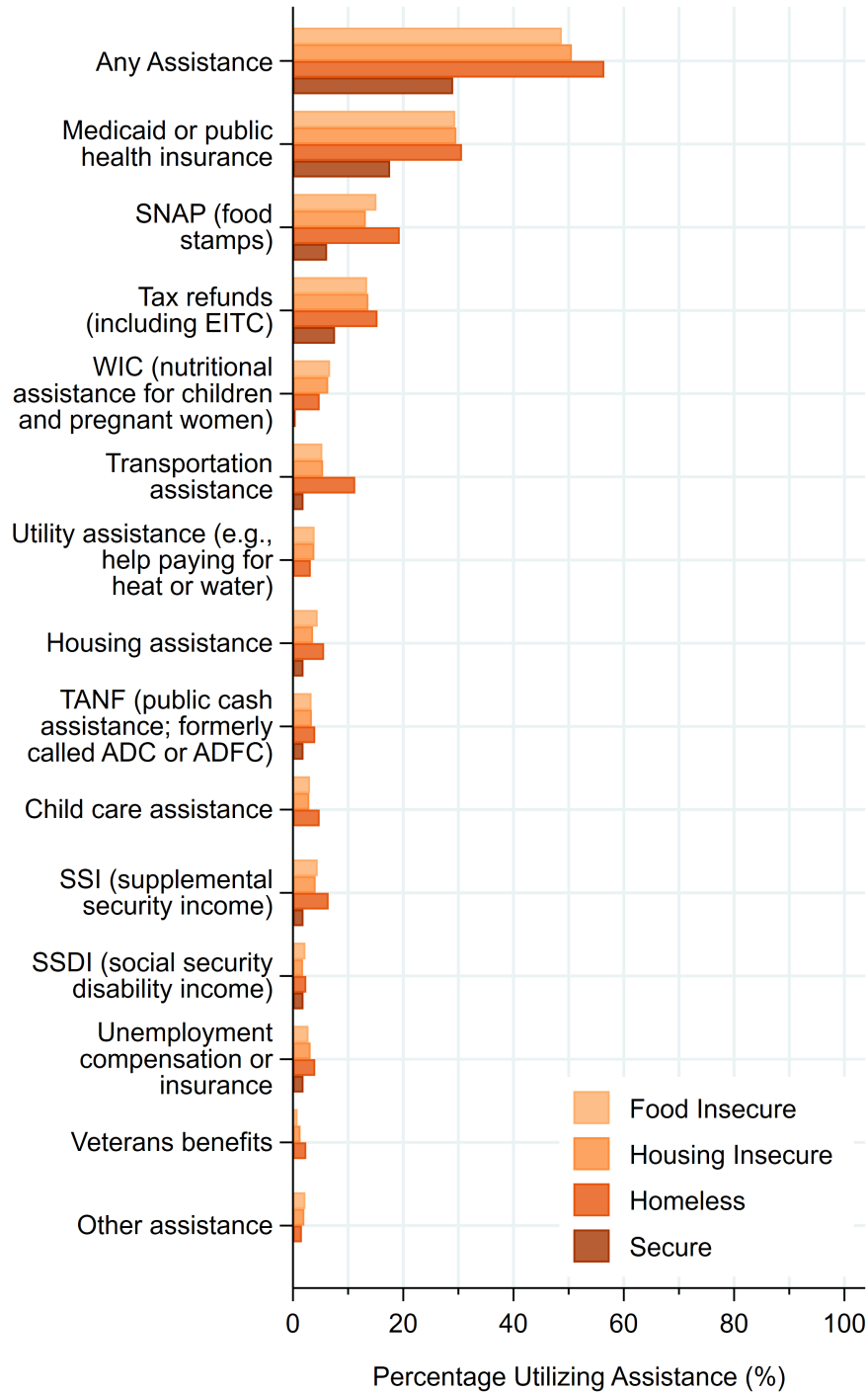
Source: 2018 #RealCollege Survey

Note: Results from any category with fewer than 10 participants are not shown in the table.

UTILIZATION OF SUPPORTS

Many students at Fullerton College who experience basic needs insecurity do not receive public assistance (Figure 7). Fully 15% of food insecure students receive SNAP. In addition, 6% of students who experience homelessness receive housing assistance. It is also worth noting that students who are secure in their basic needs are still accessing public benefits, albeit at lower rates (29%) than their peers.

Figure 7. Use of Assistance Among Survey Respondents at Fullerton College According to Basic Needs Security



Source: 2018 #RealCollege Survey

CONCLUSION

The #RealCollege survey affirms what has been evident to many college administrators, faculty, staff, and students for years: basic needs insecurity is a condition challenging many undergraduates pursuing credentials. The scope of the problem described here is substantial and should be cause for a systemic response.

ABOUT US

The Hope Center for College, Community, and Justice at Temple University is home to an action research team using rigorous research to drive innovative practice, evidence-based policymaking, and effective communications to support #RealCollege students. For more information, visit <https://www.hope4college.com>.

CONTACT INFORMATION

If you have questions about this report, please contact the Hope Center Research Team at hopesrvy@temple.edu.